

THE NARRATIVE
ENNEAGRAM

SINCE 1988

The year of resilience

2020

Annual Report

Transforming lives. Creating a more compassionate world.

NarrativeEnneagram.org



COVID-19



WE CANNOT WAIT TO
SEE YOU AGAIN.
STAY SAFE.



Table of Contents

Our People	4
Message from Our Executive Director	5
Message from Our Board President	6
2020: By the Numbers	7
New Certified Teachers/Practitioners	8
Donor List	9
Financials	10
How to Support Us	11



▲ *Ennea9 EPTP students safely gather in Nantes, France.*

The Narrative Enneagram is an educational nonprofit dedicated to transforming lives and creating a more compassionate world.

Our mission is to advance human consciousness through our pioneering Narrative Enneagram curriculum, which integrates psychology, spirituality and somatics.

We have presented Enneagram trainings in 16 countries worldwide. Our teachers and staff have a long-standing, collective experience unmatched in the field, and each of us strives for spiritual, psychological and emotional freedom, both individually and as part of larger communities.

Core & Adjunct Faculty



Helen Palmer
Co-founder; Core
Faculty Emeritus



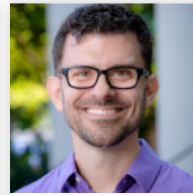
Terry Saracino
Core Faculty;
Founding President



Peter O'Hanrahan
Core Faculty



Renée Rosario
Core Faculty



**Christopher T.
Copeland**
Core Faculty



Mónica Tinoco
Adjunct Faculty;
Board Member



Marion Gilbert
Adjunct Faculty

Board of Directors



Brian Vent
President



Mary Jo Ruccio
Treasurer



**Dr. Kendra A.
O'Hora**
Secretary



Mónica Tinoco
Member; Adjunct
Faculty



Mike Alexander
Member



Evan Barbee
Member



Kirsty Spence
Member



Joyce Plaza
Outgoing President

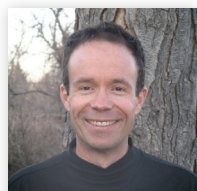


Sheryl Cohen, PhD
Outgoing Treasurer



Felicia Lee
Outgoing Member

Staff



Ed Self
Executive Director



Julia Lemke
Marketing Director



Satoya Foster
Program Coordinator
& Registrar



Pat O'Hanrahan
Database Manager;
Membership
& Internship
Coordinator



Nyree Hubbell
Accounting &
Finance Manager



Sarah Duet
Social Media
Manager



Evangeline Welch
Communications
Advisor; Outgoing
Marketing Director

**Faculty, board and staff as of Dec. 2020.*

Message from TNE's Executive Director

A Year of Change

By Ed Self, TNE Executive Director | July 26, 2021



Despite a pandemic that threatened to shut us down entirely, TNE registrations grew again by 40% in 2020. Our community wanted our programs more than ever — to manage stress, support frayed family systems and find peace in the midst of the pandemic and political unrest. Our beloved co-founder, Helen Palmer, also announced her retirement last summer. Her legacy continues stronger than ever within TNE and was honored with a beautiful endnote presentation at the 2021 IEA Global Conference.

Through 2020 and continuing into 2021, with the much appreciated support of our donors, TNE is making a large investment in our resilience — the transformative changes that will allow us to engage a much larger and more diverse audience in our programs by:

Expanding Our Program Offerings

- Ironically, the pandemic pushed us even faster toward where we already wanted to go. We took our classes online in two months, something planned to happen over three years. Beginning in 2022, we plan to offer a hybrid of online and onsite programs.
- We are offering more core and professional track trainings than ever before, plus new Everyday Exploration programs that provide steppingstone experiences for those new to the Enneagram and Lifelong Education programs for longtime students of the Narrative Enneagram, including our Certified Teachers and Practitioners.

Our Continued Commitment to Diversity, Equity and Inclusion

- We hired a highly esteemed professional, Dr. Deborah Egerton, to guide our faculty, board and staff through a yearlong in-depth exploration of diversity, equity and inclusion, which is touching every aspect of the organization.
- We committed far more scholarship funds than ever before toward diverse candidates, including a new scholarship program focused on Black, Indigenous and people of color (BIPOC).
- We expanded the diversity of our faculty, board and staff.
- We are donating to organizations at the forefront of social justice. For example: Campaign Zero, Color of Change, Bail Project and Equal Justice Initiative.

Growing Our Teaching Capacity

- We are adding to our faculty to ensure we have the teaching capacity to serve a growing Narrative community. Over the past year, we welcomed a new core faculty member, Christopher T. Copeland, and two new adjunct faculty, Mónica Tinoco and Erlina Edwards!

Upgrading our Website and Technology Platforms

- In the latter half of 2020, we began a crucial project to overhaul our website and technology platform, which will provide a much better user experience while streamlining our staff workflow. We expect to launch by early 2022.

Message from TNE's Board President

Gratitude for Our Community's Resilience

By Brian Vent, TNE Board President | July 26, 2021

No one needs to be told that 2020 was a year like no other. We were confronted by waves of vulnerabilities, suffering and loss that, for so many, were unimaginable just a short time ago. We all had to find new ways to carry on living while dealing with disruptions to our lives. The same can certainly be said about the TNE community. The pandemic put a hard stop to our in-person trainings — the practice that the Narrative Tradition was built upon.

It was almost immediately clear that inner work was never more needed than during a time of such personal and societal challenges. Many members of the TNE community, led by our faculty and staff, came together quickly to find a way to bring these important teachings online with the quality and care that has been part of our work for decades.

The depth of the online experience surprised many. Student after student told us how impactful and powerful their experience was working with their cohort and our faculty on Zoom. The online format also allowed many new students who because of financial and logistical constraints, might not have been able to participate, thereby extending the reach of the Narrative Enneagram and the richness of our community worldwide. Who would have imagined that a year like this last one would have challenged us to keep up with such growing demand?

In August 2020 during the Menlo Park Learning Community, Helen Palmer, our beloved co-founder, also announced her retirement from teaching.

"The Narrative Enneagram Board of Directors wants to wish Helen Palmer a happy and healthy retirement. Both individually and collectively, we will miss her presence and spirit, but her contributions will continue in support of furthering the mission of TNE and the work she so loves. As one of the first Enneagram teachers, Helen's leadership was instrumental in bringing the Enneagram to the world. We are grateful to Helen and her inspiring work from which we all have learned and grown. We will miss you, Helen!"

– TNE Board of Directors



Helen's courage, persistence and brilliance in her 45 years of teaching the Enneagram touched people all over the world. Read more about Helen's retirement announcement [here](#), including the several dozens of people who shared their experiences with Helen over the years.

This spirit of expansion and inclusion in this next chapter continues with the integration of the Arizona Enneagram Association and TNE beginning in 2022, enabling us to bring even more program offerings to our community and excellent teachers to join our gifted faculty.

On behalf of the TNE Board, I offer my deepest gratitude to everyone on our team and the community they work so hard to serve. Your commitment to make the Enneagram available to those seeking to learn about themselves and to teach others is an inspiration to all of us. Our intentions are to continue to expand our reach to those who have not yet experienced or had access to our transformative trainings and to deepen our growing community. Together, we can be a collective force for goodness, healing and education in the world. We are honored by all that each of you contribute.

2020: By the Numbers

People

- +1 core faculty member
- +2 adjunct faculty members
- +3 new board members
- +2 full time staff roles

Programs

- 188 registrations for onsite programs
(January through March)
- 896 registrations for online programs
(May through December)

Community

- 571 members (+130 from 2019)
- 18 new Certified Teachers and 10 new
Certified Practitioners (U.S. School)
- 12 International Training Associates
- 81 total scholarships awarded



Website

- 529,370 visitors from 214 countries
- 1.41 million pageviews
- 3,824 people took the online Essential
Enneagram Test

Social Media

- 9.2k Facebook followers (+1.3k from 2019)
- 7.6k Instagram followers (+5.5k from 2019)
- 4.3k Twitter Followers (+879 from 2019)
- 60,271 YouTube video views

*Metrics reported based on annual count by Dec. 31, 2020.

Congratulations, 2020 Certified Teachers/Practitioners!

TNE Certified Teachers

Evan Barbee	Sharon Hornbeck	Donna Thibideau
Kessuda Boonngamanong	Ariane Kessel	Naomi Tucker
Stephanie Foster	Christy LaLonde	Kathy Watters
Cyndi Gueswel	Hemla Makan-Dullabh	Melanie Whitaker
Roxanne Harrison	Liz Perez	Kim Watson
Laura Hooper	Scott Tavenner	Kristi Sunstrom

TNE Certified Practitioners

Jack Craven	Sam Drew	Paige LeBlanc
Judy Craven	Sue Guttenstein	Meagan Wiseman
Madeline Danaher	Denyse Hadley	
Meg Dennison	Carmen Lazarus	



Enneagram South Africa, one of TNE's International Training Associates, celebrates four new Certified Teachers and Graduates of the Enneagram Professional Training Program (EPTP).

Plus, congratulations to all the International EPTP graduates!

Thank you, 2020 Donors!

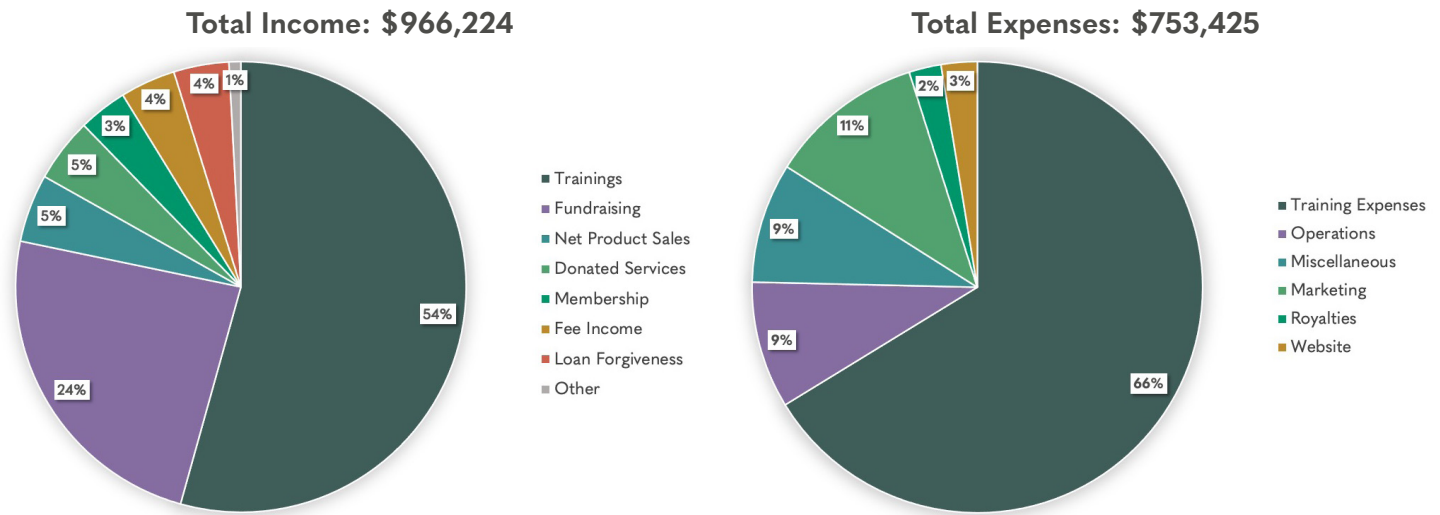
Thanks to the generous support of the Narrative Enneagram Community,
we received \$231,321 in donations in 2020.

Nisha Advani	Pam Earnest	Jamie King	Peter O'Hanrahan	Mary Solomon
Mike Alexander	Erlina Edwards	Kelli King-Jackson	Jane Okulski	Kirsty Spence
Jaye Andres	Nancy Embry	JoAn Kinrade	Jude Oyler	Jeanne St. John
Alejandro Arizpe	Jessica Esterkamp	Carrie Kirkpatrick	Kirin Parmar	Kim Stege
Alyssa Aubrey	Jennifer Falkey	Louisa Krause	Amy Passey	Linda Stenger
Chris Bagby	Gerry Fathauer	Jane Kroll	Janna Pennington	Lisa Stenner
Brenda Baird	Nicole Fishman	Tracy Lawrence	Hans Peter	Julia Stone
Michael Baldwin	Michael Fishman	Paige LeBlanc	Adele Phelan	Paul Strasburg
Tom Baldwin	Tom Flautt	Felicia Lee	Louise Phipps Senft	Cathryn Supplee
Evan Barbee	Ruth Foster	Sunny Lee	Stephen Pierce	Kristi Swob
Lindsey Barbour	Jill Foulger	Laura Lee	Joyce Plaza	Tod Tappert
Jeannie Battagin	Maureen Gatt	Winn Legerton	Karen Poole	Scott Tavenner
DK Beitel	George Gordon	Hallie Logan	Jonathan Poullard	Michelle Thompson
Kaye Bernard	Gwen Gordon	Renee Lopez	Lynda Rands	Ben Thompson
Dan Bishop	Logan Greenhaw	Julie Madsen	Bill Reed	Mónica Tinoco
Mona Bordage	Nancy Griswold	Jeanette Maggio	Pamela Reeves	Jan Turala
Fred Boykin	Sue Guttenstein	Maria Mandarino	Gail Regan	Jack Turner
Rick Bradstreet	Wendi Halet	Pat Martin	Theresa Rembert	Caitlin VanDusen
John Brett	Amy Haller	Cheryl McMillan	Gavin Richardson	Brian Vent
Dori Brown	Gingie Halloran	Jim McPartlin	Teresa Roche	Dana Vitorelo
Patricia Burbank	Lorraine Hancock	Brenda Meisburg	Ron Rojas	Trevor Walsh
Margot Burns	Stacie Hanson	Linda Messia	Renée Rosario	Mary Anne Wampler
Penny Cannon	Keller Hawkins	Jean Meyer	Lori Rosenberg	Saralise Ward
Nancy Carlson	Ruth Hill	Janis Misch	Mary Jo Ruccio	Noelle Warner
Jay Carlson	Andi Hill	Megan Mistler	Geraldine Russell	Martha Waters
Marcia Ceccato	Alan Hodgetts	Margo Montgomery	Terry Saracino	Janell Weber
Donna Chase	Theresa Hoffman	Charles Morehead	Martha Scherzer	Evangeline Welch
Anne Coffman	Keith Humphrey	Skip Morris	Rocky Schwartz	Jason White
Sheryl Cohen	Carolyn Humphreys	Anne Murao	Sophia Seage	Barbara Whiteside
Pam Cook	Melody Jackson	Susan Murphy	Ed Self	Daphne Whitman
Chris Copeland	Scott Jamieson	Kevin Murphy	Michael Shayeson	Carole Whittaker
Judy Craven	Debra Janison	Jerrilynn Myers	Charlotte Shepic	Cindy Wiley
Elaine Culverwell	David Johnson	Lisa Nack	Phil Shovlin	Marilyn Wolf
Madeline D'Andrea	Phyllis Jordan	Gary Nearpass	Ilya Silbar	Monirah Womack
Darby Davenport	Steve Katzman	Sandy Nearpass	Morgan Smith	Koriynne Wong
Allison DeHart	Monica Kelly	Wesley Nichols	Jo Anne Smith	Carolyn Workman
Karen DeHart	Jack Killen	Kristal Nicholson	Fran Smith	Amy Young
Sam Drew	Jeff King	Pat O'Hanrahan	Sarah Snyder	Jamie Ziegler

We make every effort to list all donors and ensure correct spelling. If you find your name has been inadvertently omitted or listed incorrectly, please email us at marketing@narrativeenneagram.org.

2020 Financials

Income Statement



Income

Trainings	\$524,884
Fundraising	231,321
Net Product Sales	47,173
Donated Services	44,268
Membership	33,730
Fee Income	38,355
Loan Forgiveness	38,272
Other	8,221
Total Income	\$966,224

Expenses

Training Expenses	\$499,286
Operations	68,522
Miscellaneous*	64,795
Marketing	83,989
Royalties	17,345
Website	19,488
Total Expenses	\$753,425
Net Income	\$212,799

Balance Sheet

Assets

Cash	\$352,580
Accounts Receivable	6,654
Prepaid Expense	22,526
Inventory	2,064
Investments	401,517
Net Fixed Assets	56,239
Total Assets	\$841,580

Liabilities

Accounts Payable	\$47,427
Accrued Payroll Costs	9,724
Deferred Revenue	148,305
Total Liabilities	\$205,456

Equity

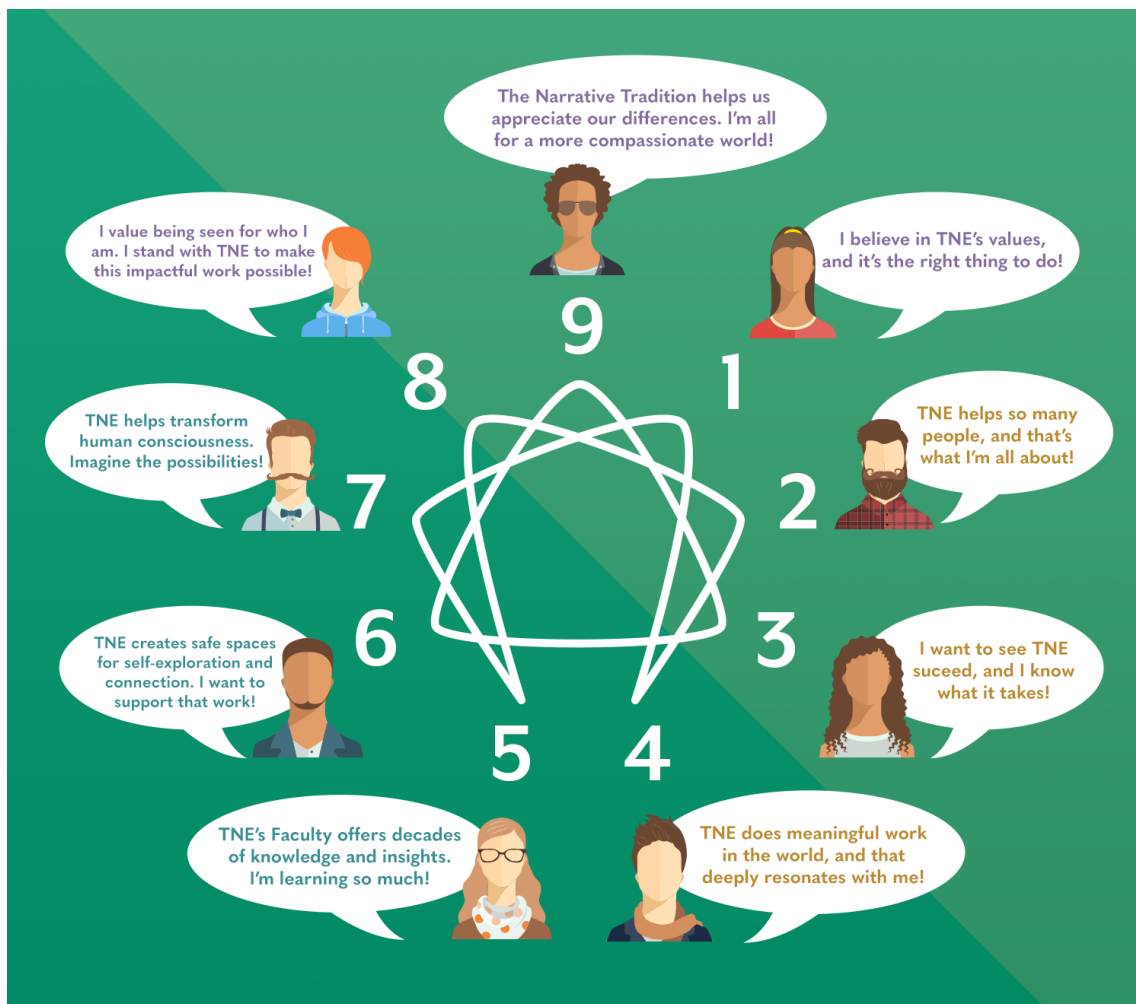
Net Assets	\$423,325
Net Income	212,799
Total Equity	\$636,124

* Includes database, credit card fees, professional fees, travel and other expenses

Total Liabilities & Equity

\$841,580

How to Support Us



Our 2021 Fundraising Goal: \$222,000

With registration fees covering only 70% of TNE's annual expenses in 2020, we rely on our generous donors to make up the difference. Please consider supporting TNE with a contribution that fits your budget. Monetary donations may start as small as a \$10 one-time or monthly donation. You also may donate stock, set up planned giving or employer-match programs, transfer your airline miles and/or shop at AmazonSmile. A portion of every dollar we receive supports our scholarship programs.

Please consider contributing today at www.NarrativeEnneagram.org/donate. Or send a check payable to "TNE" to **PO Box 4114, Boulder, CO 80306-4114**.

Other direct ways to support us include:

- Become a TNE member at an annual cost of \$60/year. www.NarrativeEnneagram.org/tne-membership
- Participate in our trainings and workshops. www.NarrativeEnneagram.org/programs
- Share your experience with colleagues, clients, friends and family to our programs. *Many of our program participants come from your generous referrals!*

Thank you for your continued generosity and support!



THE NARRATIVE ENNEAGRAM

SINCE 1988

